



JOSA Series | JOSAL-D

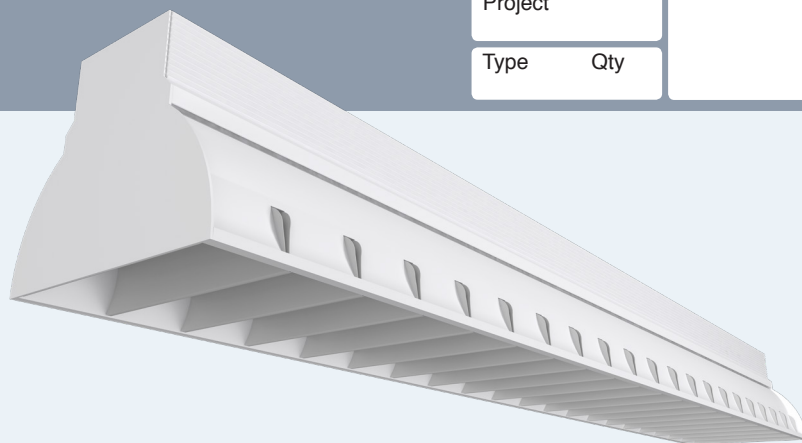
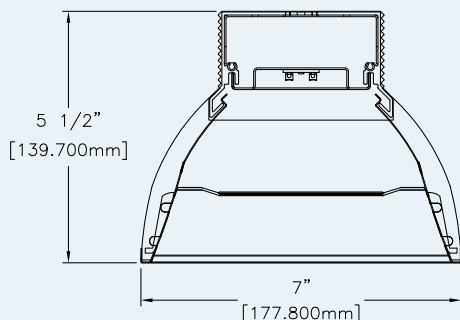
Date

Notes

Project

Type

Qty



Features

Extruded aluminum housing with die-formed aluminum reflector.

LED optimized optics for even illumination end-to-end.

Decorative suspended pendant with parabolic louvers to eliminate glare.

High efficiency programmable driver for custom lumen packages. 0-10V dimming to 1% standard.

High efficacy LEDs in 80 or 90 CRI; two or three channel tunable white; five channel tunable color.



Direct

Ordering Guide

| MODEL | OPTICS | CCT | LUMENS ² | LENGTH ³ | MOUNTING ⁴ | FINISH | OPTIONS |
|----------------|---|---|--|--|---|--|--|
| JOSAL-D | PBL | | | | | | |
| JOSAL Direct | PBL = Parabolic louver with acrylic overlay | 27 = 2700K 80CRI 30 = 3000K 80CRI 35 = 3500K 80CRI 40 = 4000K 80CRI 50 = 5000K 80CRI For 90 CRI add "9" prefix. Ex: 940 = 4000K @ 90 CRI TUNABLE WHITE¹ (2-Channel) 2DIM10 = for 0-10V 2DMX = for DMX 2DLM = for DLM TUNABLE WHITE¹ (3-Channel) 3DMX = for DMX 3DML = for DLM TUNABLE COLOR¹ (Lumenetix araya5) LX10 = for 0-10V LXDX = for DMX LXDL = for DLM LXDA = for DALI LXLT = for EcoSystem For RGB and RGB/W options please consult factory. | LO = 540/ft (5W/ft, 108LPW) SO = 750/ft (7W/ft, 106LPW) HO = 900/ft (9W/ft, 100LPW) Consult factory for additional lumen packages. All values nominal. | 4 = 4 ft 6 = 6 ft 8 = 8 ft 12 = 12 ft 16 = 16 ft 20 = 20 ft 24 = 24 ft For other enter row length (e.g. 48 = 48 ft) | AC = Aircraft Cable PD = Pendant Stem S = Surface Mount | W = White CC = Custom Color AMW = Anti-Microbial White | DIMMING DRIVERS DIM10 = 0-10V (1.0%) DIMSR = 0-10V (5.0%) Sensor Ready DIMST = Step Dimming (40%/100%) DALI = DALI (5.0%) LUTRON™ DIMMING DRIVERS LDE1 = Hi-Lume™ 1%-H EcoSystem™ LDE5 = 5-Series 5% EcoSystem™ L3DAE = Hi-Lume™ 1% EcoSystem™ L3DA3W = Hi-Lume™ 1% 3-Wire LTEA2W = Hi-Lume™ 1% 2-Wire FFC SENSORS & CONTROLS ESN = Philips™ EasySense DAY = Daylight Harvesting OCC = Occupancy Sensor LVC = 2-Channel LV Controller EMERGENCY EPC4 = (4W) 400 Delivered Lumens EPC7 = (7W) 700 Delivered Lumens EPC10 = (10) 1000 Delivered Lumens EPC12 = (12W) 1200 Delivered Lumens GTD = Generator Transfer Device EMC = Emergency Circuit |

¹Tunable white, tunable color and RGB/W options detailed on page 4.

²Delivered Lumens are Standard Output (SO) and Low Output (LO) at 80+CRI 4000K CCT. Use the following multiplier to estimate delivered lumens at other CCTs: 2700K = 0.94, 3000K = 0.96, 3500K = 0.98, 5000K = 1.02. All values nominal. See page 3 for photometry.

³See page 2 for actual fixture lengths and suspension locations.

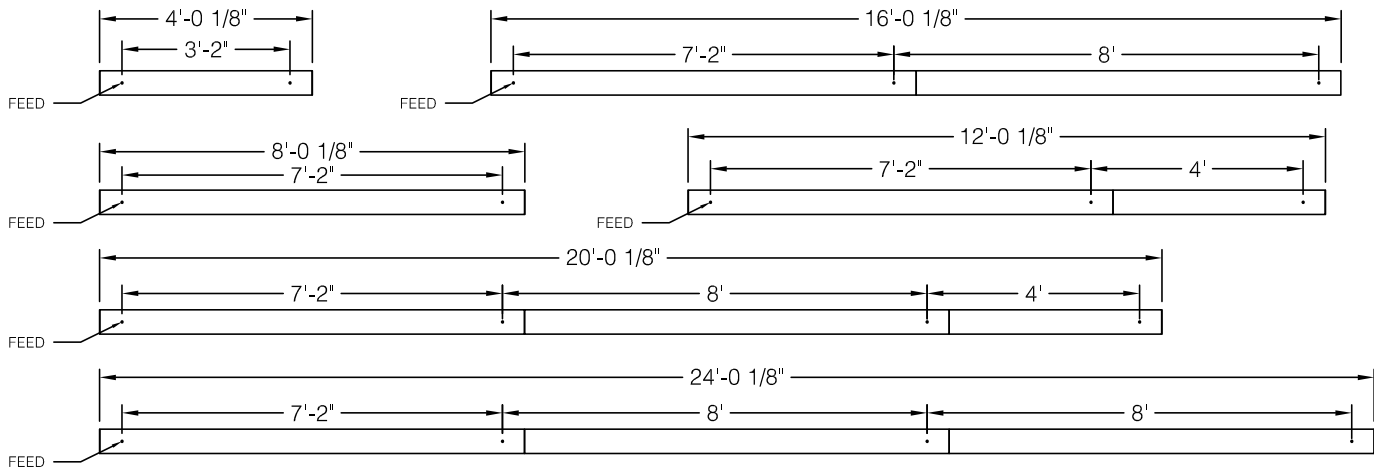
⁴See page 2 suspension details.



Linear Sections and Suspension Locations

| NOMINAL LENGTH | ACTUAL LENGTH | SUSP. 1 O.C. | SUSP. 2 O.C. | SUSP. 3 O.C. |
|----------------|---------------|--------------|--------------|--------------|
| 4' | 4' 1/8" | 3' 2" | | |
| 8' | 8' 1/8" | 7' 2" | | |
| 12' | 12' 1/8" | 7' 2" | 4' | |
| 16' | 16' 1/8" | 7' 2" | 8' | |
| 20' | 20' 1/8" | 7' 2" | 8' | 4' |
| 24' | 24' 1/8" | 7' 2" | 8' | 8' |

Individual fixtures up to 8' nominal and continuous rows up to 24' nominal are dimensioned as shown below. Continuous rows longer than 8' and patterns including EPC/EMC and sensor locations must be approved prior to manufacturing.



Emergency & Sensor Locations

EPC will control entire length of individual fixtures. Individual fixtures of differing lengths will deliver the same lumens under EPC power (a 4' fixture will deliver the same total lumens over half the length of an 8' fixture). EMC controlled individual fixtures will deliver lumens per foot as originally specified, unless dimmed at time of power loss. Consult factory for EMC dimming override device.

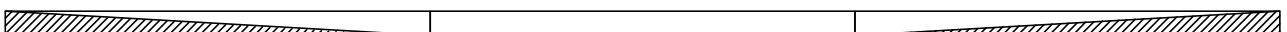
4' Individual 

8' Individual 

For continuous rows longer than 8' one EPC/EMC will be located in the feed section (end-left) of the row as shown below.

24' Row (3x8') 

If two EPC/EMC's are required their default locations will be in the feed section (end-left) and last section (end-right) as below.

24' Row (3x8') 

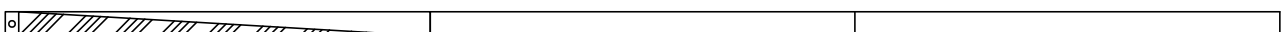
Custom placement of one or more EPC/EMC's must be clearly identified during ordering.

24' Row (3x8') 

SENSORS (Integral) for individual fixtures will control entire length of fixture and will be located on feed end of fixture.

8' Individual 

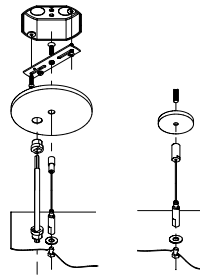
SENSORS for rows by default will control the feed section (end-left) of the row. Sensors can control more than an 8' section within a row. Consult factory for sensor/section options, or for multiple sensors in a continuous row.

24' Row (3x8') 

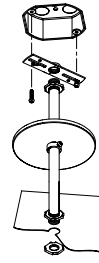
Standard Suspensions

Standard suspension options include adjustable self-locking aircraft cables (AC) and rigid pendant stems (PD). AC assembly is 48" x 1/16" with a 5" feed canopy and 2" suspension canopies. 60" 18 gauge power and 22 gauge dimming control SJT feed.

PD assemblies are 5/8" dia. (or 3/8" IP) hollow stem for power feed by others, 24" is standard. Consult factory for longer suspension lengths and other mounting options.



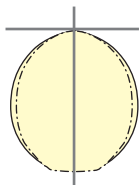
AC = Aircraft Cable



PD = Pendant Stem

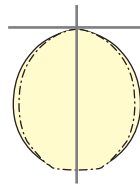
Photometry

JOSAL-D-PBL-40-LO-4



4000K CCT
WATTS: 21
LUMENS: 2227
LPW: 106
Distribution:
95% Direct
5% Indirect

JOSAL-D-PBL-40-SO-4



4000K CCT
WATTS: 28
LUMENS: 2970
LPW: 106
Distribution:
95% Direct
5% Indirect

Specifications

HOUSING: Extruded aluminum housing with die-formed aluminum reflector.

REFLECTOR: Highly reflective die-formed steel finished in baked white enamel.

OPTICS: Parabolic louvers with white opal acrylic overlay.

LEDs: LED modules in 30/35/40 & 50K CCT, 80+ CRI (90 CRI available). Lumen maintenance minimum $L_{70} = 50,000$ hours @ 25 C° ambient temperature. 3 SDCM color consistency. Zhaga™ compliant (Book 7).

ELECTRICAL: Class 2 AOC electronic driver, 120/277V input, PF > 90%, THD < 20 @ 120V. 0-10V dimming to 5%. -20C to +50C operating range. <24dB Class A sound rating. 0-10V dimming is standard.

MOUNTING Standard options include adjustable self-locking aircraft cables (AC), and rigid pendant stems (PD). AC assembly is 48" x 1/16" with a 5" feed canopy and 2" suspension canopies. 18 gauge power and 22 gauge dimming control SJT feed.

FINISH: Fixture housing and steel components are finished in baked white enamel applied over a five-stage pretreatment process. Canopies and pendant stems are white enamel unless otherwise specified

CERTIFICATION: Luminaires are cETLus listed conforming to UL STD. 1598 and certified to CSA TD C22.2 NO. 250.0. Suitable for dry locations; consult factory for damp locations. Union Made in the United States of America. I.B.E.W. RoHS compliant.

Day-O-Lite offers a variety of tunable white and tunable color options for a range of human centric applications and budgets. It is recommended that a recognized authority on the benefits and best practices of tunable white be consulted prior to specification. As a rule, fewer channels will provide a basic level of performance for budget conscious applications. Conversely, an increased number of channels, a wider CCT range, higher CRI and more precise color consistency may be more appropriate depending on the application and desired results.

HOW TO SPECIFY

Select from the various channel/control options below and insert desired **Ordering Code** into the **COLOR TEMP** column of the Ordering Guide on page 1. No need to add a dimming option as the codes include the chosen protocol.

2-CHANNEL TUNABLE WHITE OPTIONS

2700K - 6500K CCT range

1000L/ft LED modules @ 4000K

80+ CRI w/3SDCM color accuracy

10W/ft. nominal power

Ordering Codes

2DIM10 for 0-10V control
2DALI for DALI control
2DMX for DMX control
2LTQ for Lutron Quantum control
2SNS for control via Signify SNS sensors
 (requires wireless control by others)

LEGRAND BLANCO MULTI-CHANNEL OPTIONS

Blanco-2

Blanco-2 mixes two channels of white LEDs to approximate the blackbody curve for tunable white applications. CCT and intensity may be adjusted with controls by others.

3000K-5000K CCT range

1000L/ft LED modules @ 4000K

90+ CRI w/2SDCM color accuracy

10W/ft. nominal power

Ordering Codes

B2DLM for DLM control
B2DIM10 for 0-10V control
B2DMX for DMX control

Blanco-3

Blanco-3 mixes three channels of white LEDs across a wider range of color temperatures for more demanding tunable white applications. CCT and intensity may be adjusted with controls by others.

2700K-6500K CCT range

1000L/ft. LED modules @ 4000K

90+ CRI w/SDCM color accuracy

10W/ft. nominal power

Ordering Codes

B3DLM for DLM control
B3DIM10 for 0-10V control
B3DMX for DMX control

LUMENETIX ARAYA5 TUNABLE COLOR

araya5 by Lumenetix mixes five colors of LEDs for advanced tunable color that closely matches the black body locus for the most demanding human centric applications. CCT and intensity may be controlled via 0-10V, DALI, DLM and Lutron EcoSystem controls. CCT, intensity, hue and saturation may be controlled via DMX controls. Ideal for use in hospitals, therapy and recovery centers, and assisted living facilities.

On board Bluetooth low energy (BLE)

1650K-8000K CCT range w/90+ CRI

Dimming from 100% to 1% or 0.1%

Gradients of saturated color and hue from 1-100%

2SDCM - thermal/optical feedback for color accuracy

Ordering Codes

LX10 for 0-10V control
LXDX for DMX controls
LXDL for DLM controls
LXLT for Lutron EcoSystem controls
LXDA for DALI controls

RGB & RGB/W TUNABLE COLOR

RGB = Red, green, blue color mixing LEDs

RGB/W = Red, green, blue w/white of chosen CCT

Dimming from 100% to 1%.

90+ CRI w/3SDCM color accuracy

10W/ft. nominal power

Ordering Codes

RGB for DMX control
RGB27 for DMX control w/2700K white
RGB30 for DMX control w/3000K white
RGB35 for DMX control w/3500K white
RGB40 for DMX control w/4000K white
RGB50 for DMX control w/5000K white
RRB65 for DMX control w/6500K white

Day-O-Lite makes no claims as to the psychological or physiological efficacy of the white color tuning options offered herein.