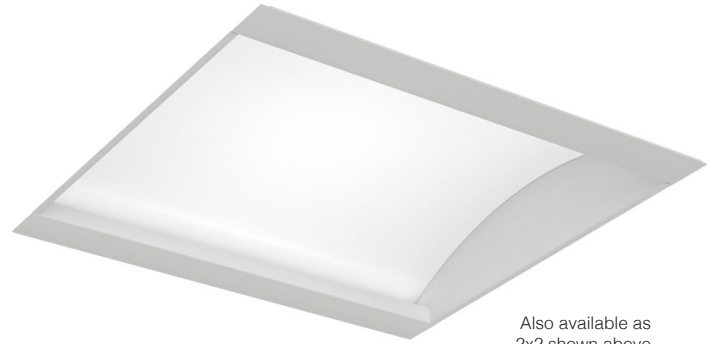
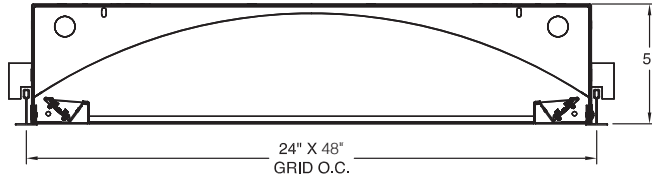




New Age Series | NASL-2821 2x4

Date	Notes
Project	
Type	Qty



Also available as 2x2 shown above.

Features

- Steel housing and reflector with a 5-stage baked enamel finish.
- The open concave reflector is indirectly illuminated by LEDs creating a very smooth, glare free look.
- LED Optimized diffuse dust covers in an open reflector housing.
- For installation in a wide variety of suspended grid ceilings, including Slot Grid and Tegular.
- High efficiency driver for custom lumen packages. 0-10V dimming to 1% standard.
- High efficacy LEDs in 80 or 90 CRI; two or three channel tunable white; tunable color.



Ordering Guide

MODEL	OPTICS	CCT ¹	LUMENS ²	SIZE	MOUNTING ³	FINISH	OPTIONS
NASL-2821-D	DC			24			
NASL-2821-D Direct	DC = LED Optimized diffuse dust covers in an open reflector housing.	27 = 2700K 80CRI 30 = 3000K 80CRI* 35 = 3500K 80CRI* 40 = 4000K 80CRI* 50 = 5000K 80CRI 90 CRI add *9" Ex: 940 = 4000K @ 90 CRI	LO = 3540L (42W, 84LPW) SO = 4724L (56W, 84LPW) HO = 5900L (70W, 84LPW) Consult factory for additional lumen packages. All values are nominal.	24 = 2x4	G = Grid MG = Mini Grid SG = Slot Grid S = Surface F = Flange See all mounting options page 2.	W = White CC = Custom Color AMW = Anti-Microbial White	<p>DIMMING DRIVERS</p> <p>DIM10 = 0-10V (1.0%) - Standard</p> <p>DIMSR = 0-10V (5.0%) Sensor Ready</p> <p>DIMST = Step Dimming (40%/100%)</p> <p>DALI = DALI (5.0%)</p> <p>LUTRON™ DIMMING DRIVERS</p> <p>LDE1 = Hi-Lume™ 1% EcoSystem™</p> <p>LDE5 = 5-Series 5% EcoSystem™</p> <p>L3DA3W = Hi-Lume™ 1% 3-Wire</p> <p>LTEA2W = Hi-Lume 1% 2-Wire 120V</p> <p>EMERGENCY</p> <p>EMC = Emergency Circuit</p> <p>GTD = Generator Transfer Device</p> <p>EPC4 = 4W Emergency Battery Pack</p> <p>EPC7 = 7W Emergency Battery Pack</p> <p>EPC10 = 10W Emergency Battery Pack</p> <p>EPC12 = 12W Emergency Battery Pack</p>
		<p>TUNABLE WHITE & COLOR¹</p> <p><u>2-Channel White</u> 2DIM10 = for 0-10V 2DALI = for DALI 2DMX = for DMX 2PSQ = for Lutron 2SNS = for Signify 2CAS = for Casambi</p> <p><u>3-Channel White</u> 3DLM = for DLM</p> <p><u>3-Channel Color</u> RGB</p> <p><u>4-Channel Color/White</u> RGBW</p> <p><u>5-Channel Color/Warm White/Cool White</u> RGBWW</p>					

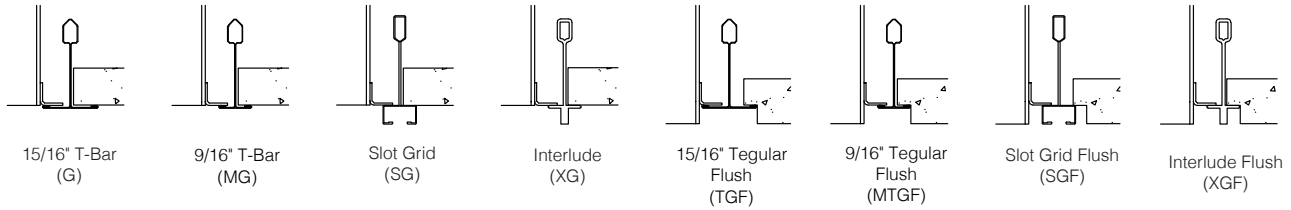
¹Tunable white, tunable color and RGB/W options detailed on page 3.

²Delivered Lumens are at 80+CRI 3500K CCT. Use multipliers to estimate delivered lumens at other CCTs: 2700K = 0.96, 3000K = 0.98, 4000K = 1.02, 5000K = 1.04.

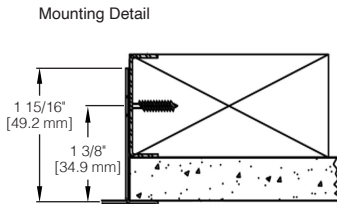
³See page 2 for ceiling mounting options details and full specifications.



Grid Mounting Options



Drywall Ceiling

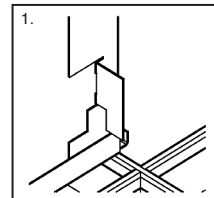


Flange Kit for drywall ceilings available:

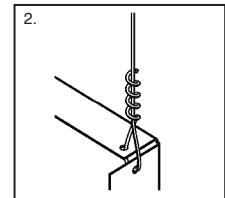
Grid Ceiling

Five-step Universal Installation Sequence.

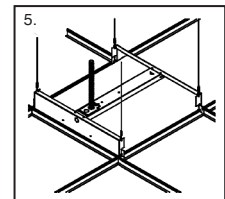
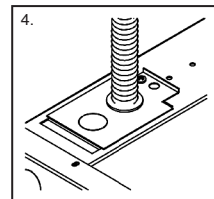
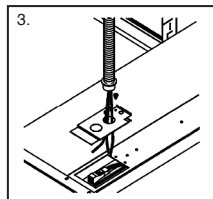
Complete Installation Instructions for grid and drywall ceiling types are available at: www.dayolite.com



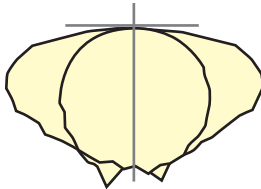
Position Fixture



Secure Tie Wire



Photometry



NASL-2821-D-SI-35-LO-24

CCT: 3500K
WATTS: 42
LUMENS: 3540
LPW: 84
Distribution:
100% Direct

NASL-2821-SI-35-SO-24

CCT: 3500K
WATTS: 56
LUMENS: 4724
LPW: 84
Distribution:
100% Direct

NASL-2821-D-SI-35-HO-24

CCT: 3500K
WATTS: 70
LUMENS: 5900
LPW: 84
Distribution:
100% Direct

Specifications

CONSTRUCTION: 20 gauge CRS housing and internal components. Extruded Aluminum divider rails with specular aluminum inserts.

REFLECTOR: 20 gauge CRS finished in highly reflective baked white enamel with pre-finished reflective LED tray.

OPTICS: LED Optimized diffuse dust covers (DC) in an open reflector housing.

LED: LED modules in 30/35/40 & 50K CCT, 80 CRI (90CRI available). $L_{70} = 50,000$ hours. 3 SDCM color consistency: field replaceable.

DRIVER Standard driver is Class 2 AOC 0-10V to 1%, 120/277V input, PF > 90%, THD < 20 @ 120V. Additional dimming protocols available. All drivers prewired from factory for connection to control system (by others). Field replaceable.

MOUNTING: Standard installation is in an exposed inverted T-bar ceiling. Fixtures are supplied with four support brackets for additional support to T-bar. May also be installed in a plaster ceiling (F/TRL mounting option with Flange); field replaceable.

FINISH: Housing and components finished in baked white enamel.

CERTIFICATION: Luminaires are cETLus listed conforming to UL STD. 1598 and certified to CSA STD C22.2 NO. 250.0. Suitable for dry & damp locations. Union Made in the United States of America. I.B.E.W. RoHS compliant.

Day-O-Lite offers a variety of tunable white and tunable color options for a range of human centric applications and budgets. It is recommended that a recognized authority on the benefits and best practices of tunable white be consulted prior to specification. As a rule, fewer channels will provide a basic level of performance for budget conscious applications. Conversely, an increased number of channels, a wider CCT range, higher CRI and more precise color consistency may be more appropriate depending on the application and desired results.

HOW TO SPECIFY

Select from the various channel/control options below and insert desired **Ordering Code** into the **COLOR TEMP** column of the Ordering Guide on page 1. No need to add a dimming option as the codes include the chosen protocol.

2-CHANNEL TUNABLE WHITE OPTIONS

2700K - 6500K CCT range
1000L/ft LED modules @ 4000K
80+ CRI w/3SDCM color accuracy
10W/ft. nominal power

Ordering Codes

2DIM10 for 0-10V control
2DALI for DALI control
2DMX for DMX control
2PSQ for Lutron Quantum control
2SNS for control via Signify SNS sensors
2CAS for control via Casambi BLE wireless devices

LEGRAND BLANCO MULTI-CHANNEL OPTIONS

Blanco-2

Blanco-2 mixes two channels of white LEDs to approximate the blackbody curve for tunable white applications. CCT and intensity may be adjusted with controls by others.

3000K-5000K CCT range
1000L/ft LED modules @ 4000K
90+ CRI w/2SDCM color accuracy
10W/ft. nominal power

Ordering Codes

B2DLM for DLM control

Blanco-3

Blanco-3 mixes three channels of white LEDs across a wider range of color temperatures for more demanding tunable white applications. CCT and intensity may be adjusted with controls by others.

2700K-6500K CCT range
1000L/ft. LED modules @ 4000K
90+ CRI w/2SDCM color accuracy
10W/ft. nominal power

Ordering Codes

B3DLM for DLM control

RGB & RGBW TUNABLE COLOR

RGB = Red, Green, Blue color mixing LEDs
RGB/W = Red, Green, Blue + White of chosen CCT
Dimming from 100% to 1%.
90+ CRI w/3SDCM color accuracy
10W/ft. nominal power

Notes:

RGB requires an RGB DMX or DALI controller (by others)

RGBW requires an RGBW DMX or DALI controller (by others)

All channels on one driver is standard, if isolating the White from the RGB channels is desired please consult factory.

RGB and RGBW are not recommended for tunable white applications.

Ordering Codes

RGB for DMX control
RGB27 for DMX control w/2700K white
RGB30 for DMX control w/3000K white
RGB35 for DMX control w/3500K white
RGB40 for DMX control w/4000K white
RGB50 for DMX control w/5000K white
RGB65 for DMX control w/6500K white
Add Suffix **DAL** for DALI Control to codes above.

5-CHANNEL TUNABLE WHITE AND COLOR

RGBWW = Red, Green, Blue, Warm White, Cool White.
Consult factory for RGBWW tunable white/color options.